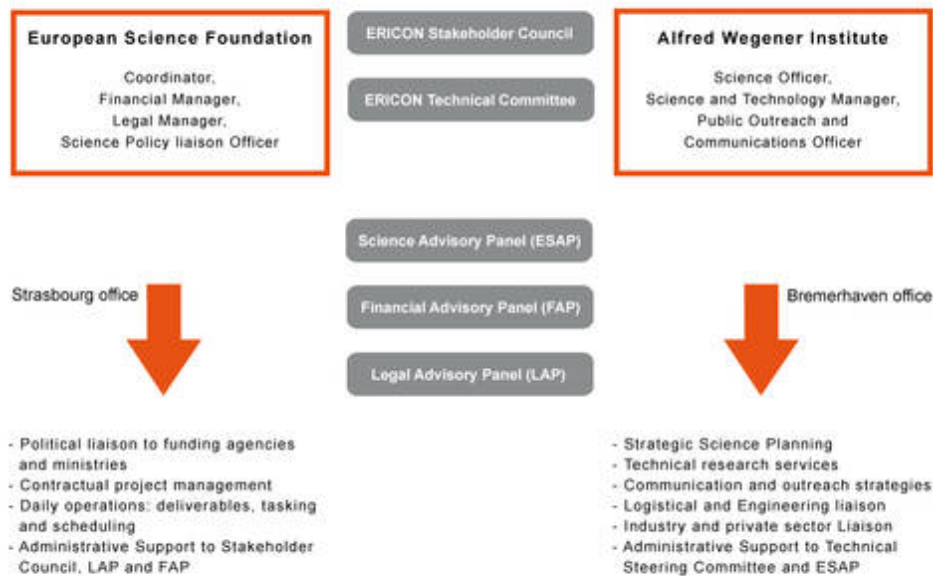


WP1: Consortium project management framework

This work package ensures the efficient management of the coordination and support actions throughout the lifetime of the 4-year project. This consists of two identifiable nodes:

1. Political engagement, operational management, liaison with funding agencies and contractual issues based at the European Science Foundation (ESF)
2. Scientific and technical management as well as communication and public outreach at the Alfred Wegener Institute (AWI)

ERICON - AURORA BOREALIS management and functional responsibilities



[Back to the project overview ...](#)